



CLUTCHTECH



TSB - NI140

To suit vehicles fitted with: VR38, VQ35HR/ VQ37HR, VQ40DE, VQ35DE, YD25, YD25 HO and VK56DE engines.

If the vehicle has a timing sensor on the side of the gearbox, it is highly recommended to remove it before beginning the removal process of the transmission. This will prevent any damage occurring to the sensor/ wiring.

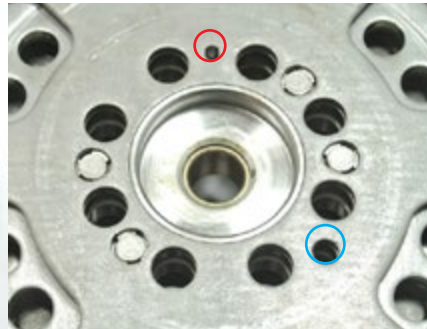
Crank/ Flywheel Alignment

The alignment of the flywheel to the crank is critical in various Nissan flywheel applications. The sensor marks on the flywheel must be in the correct alignment with the crank to ensure the correct signal is read by the ECU.

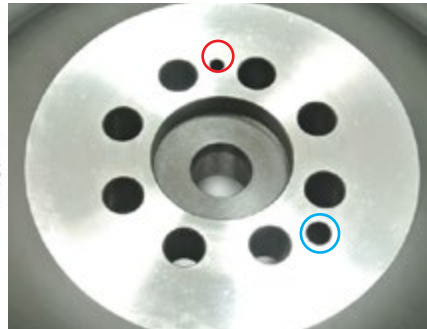
Please note the two holes on the back of the flywheel which must be aligned on the crank during installation:

- 1) Visual alignment hole (will have a small mark on the crank)
- 2) Locating dowel hole (aligns with the dowel (DO-NI-01) in the crank)

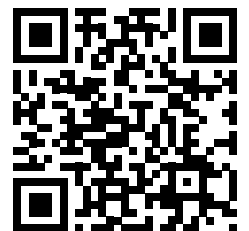
Dual Mass Flywheel



Single Mass Flywheel



youtube.com/watch?v=aL-Ck1JCSVA



Scan with a QR app on your smart phone

LEADING BRANDS

CLUTCHPRO CLUTCHPRO
COMMERCIAL



australianclutch.com.au

1800 CLUTCH (258824)

